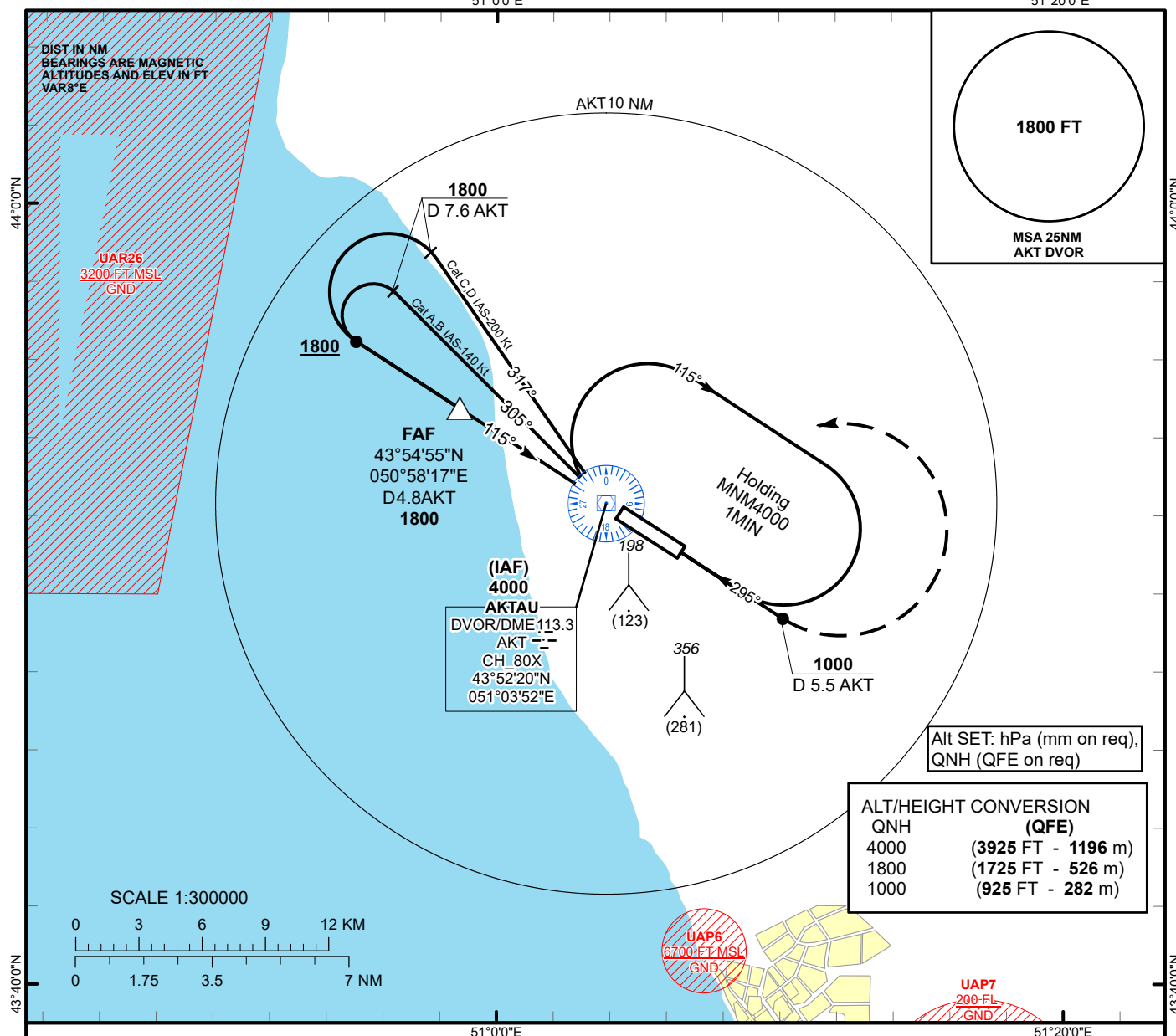


INSTRUMENT  
APPROACH  
CHART - ICAO

AERODROME ELEV **75 FT**  
THR RWY 11 - ELEV **71 FT**  
HEIGHTS RELATED TO AD ELEV

AKTAU TOWER 120.70  
AKTAU ATIS (EN) 130.1  
AKTAU ATIS (RU) 126.2

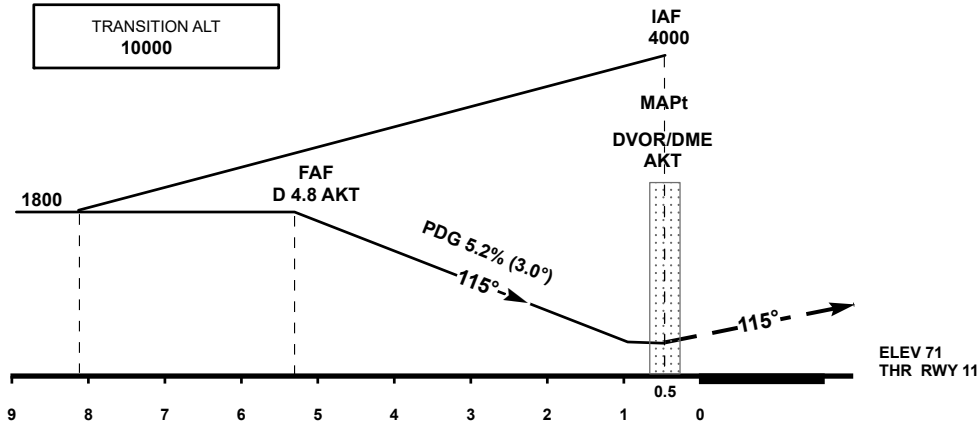
AKTAU  
VOR/DME Z  
RWY 11



MISSED APPROACH

Climb on track 115° to 1000 or above  
outbound to 5.5 AKT.  
Turn LEFT to AKT.  
Climb initially to 1800, then as directed.  
RADIO FAILURE: In the case  
of RCF climb to 4000 to AKT and  
join to holding pattern.  
Missed approach turn speed limited  
to 250 Kt IAS maximum.

TRANSITION ALT  
**10000**



Aircraft Category		A	B	C	D	DIST to THR	NM	5.3	4	3	2	1	
Straight-in Approach OCA/H						DME AKT	NM	4.8	3.5	2.5	1.5	0.5	
	VOR/DME	370(300)	370(300)	370(300)	370(300)	ALTITUDE	FT	1800	1394	1075	757	439	
						HEIGHT	FT	1729	1323	1004	686	368	
Aerodrome Operating Minima MDH ft x RVR(CMV)	VOR/DME												
						GS	Kt	80	100	120	140	160	180
						Desc.Rate (5.2%)	ft/min	420	530	630	740	840	950
						FAF-MAPt (4.8 NM)	min:sec	3:36	2:53	2:24	2:03	1:48	1:36

Change: Edit.

AKTAU  
VOR/DME Z

AERONAUTICAL DATA TABULATION

VOR/DME approach to RWY11 from AKT DVOR/DME	
Fix/point	Coordinates
AKT DVOR/DME (IAF)	43° 52' 20.3"N 051° 03' 51.9"E
(FAF) D4.8 AKT	43° 54' 54.8"N 050° 58' 17.4"E
THR RWY 11	43° 52' 03.01"N 051° 04' 29.51"E
Final approach descent angle is 3°	